

# 2021 ANNUAL GENERAL REPORT



Exciting, disappointing, amazing, challenging, fun, heart-breaking would be just some of the confusing words that we might use as we look back to 2021. A year where Covid restrictions had a massive impact on the work but also a year where we have been able to adapt and respond to changes in government guidance to continue in our heart to reach out to our community. It has been a year where we have seen growth in a number of different areas, particularly supporting work in two other communities beyond Pinehurst, started work in another Secondary School and welcomed new team members to the work. But it also has been a year of many challenges particularly for those we have the privilege of working alongside.

First a word of thanks to all those who have given time, money and energy to being part of shine. Whether that be church members, the Trustees, the staff, the incredible team of volunteers (including many children and young people), the partner organisations who we work together with, all the fantastic Diocesan staff, the individual donors, or the foundations, companies and trusts that have given so generously towards the work. We are truly grateful.



### Shine 'Church'

Since Summer 2020 we have been meeting outside for shinebreakfast in rain, wind and shine! Normally at The Beach Hut, but also in the Urban Forest, The Beach, The Venny and Seven Fields. Being outside for the last 18 months has been a great way of navigating Covid restrictions safely but it has also been great to explore and experience Gods wonderful world first hand. We have also found that those families with children with learning or behaviour difficulties due to Autism or ADHD have found the freedom of the space really valuable and many parents talk of how they can relax and are not afraid of how their child's behaviours will be received.

Each time we gather everyone gets involved: whether the young people are cooking the bacon rolls, or children making everyone hot chocolate, or the wide variety of voices involved in leading the time together, its a beautiful

gathering of different ages and backgrounds.

We were grateful to the staff and customers from ASDA who donated 267 Easter eggs to give out a giant egg hunt through the 'Courts' area of Pinehurst as part of Easter celebrations which included seeing the sunrise on top of The Venny!

It was great to baptise 5 people in July and while it was frustrating to only be allowed 30 people to be there it was a fantastic time together - with cake and a crazy water fight afterwards! A couple of months later we travelled with St. Peters and St. Philips to Bristol Cathedral where Jodie and Whitney got confirmed by Bishop Viv!

Later in the year we were able to run a Hero Training Camp for 40 local children looking at Jesus as a hero. It was great fun and lovely to work together as a team and everyone had a great time - except Simon & Nathan who got gunged at the end of the week!

WELCOME 😊  
♥ MESSY ★  
SATURDAY

### Messy Saturday

Messy Saturday is our family focussed expression of church. With restrictions limiting the ability to meeting in person the first half of the year we had 'Messy Saturday in a Bag' where each month up to 40 bags of art & craft activities around the theme were delivered to homes across Pinehurst, Penhill and surrounding areas. Along with the resources in the bags we put together a YouTube play-list with songs, games and instructions for the activities in the bags - many of them led by the children!!

After repeated requests from families for when it was going to return it was with great excitement that we

relaunched in person gatherings in September. Numbers were limited to 50 people and the online registration was full within 2 hours of opening - and with a waiting list!! Despite everyone's nervousness of gathering in larger numbers it was great to see everyone in person and we had a great time exploring the theme of 'Lost Things'! Two further in person gatherings happened in November and December with over 70 people joining in making a community Christmas wreath for the Beach Hut as one of the activities. Also in December we had our Messy Christingle which was great fun and had a really powerful moment when Eleya, 10, read a poem she had written about the real meaning of Christmas. Fantastic!

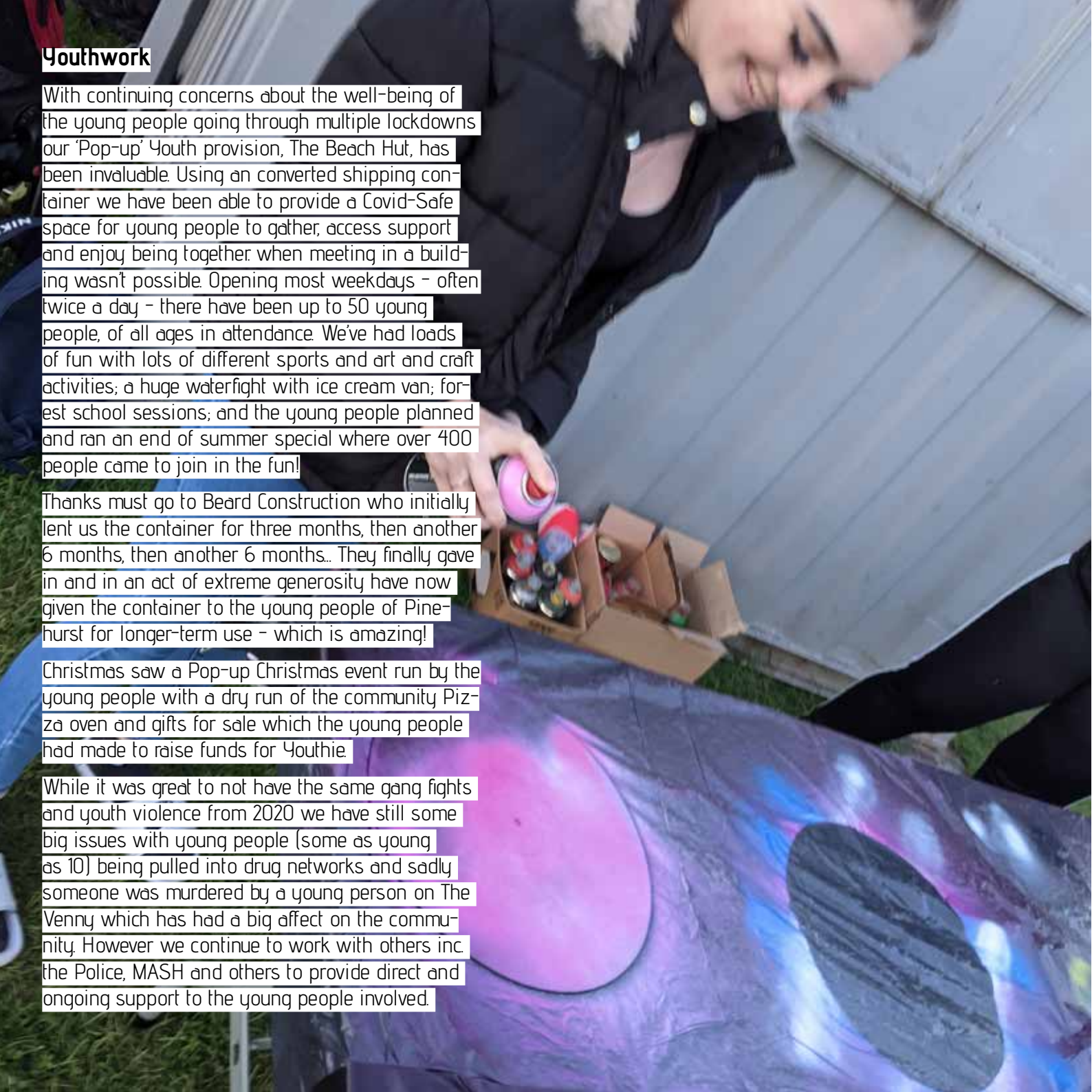
## Youthwork

With continuing concerns about the well-being of the young people going through multiple lockdowns our 'Pop-up' Youth provision, The Beach Hut, has been invaluable. Using an converted shipping container we have been able to provide a Covid-Safe space for young people to gather, access support and enjoy being together when meeting in a building wasn't possible. Opening most weekdays - often twice a day - there have been up to 50 young people, of all ages in attendance. We've had loads of fun with lots of different sports and art and craft activities; a huge waterfight with ice cream van; forest school sessions; and the young people planned and ran an end of summer special where over 400 people came to join in the fun!

Thanks must go to Beard Construction who initially lent us the container for three months, then another 6 months, then another 6 months.. They finally gave in and in an act of extreme generosity have now given the container to the young people of Pinehurst for longer-term use - which is amazing!

Christmas saw a Pop-up Christmas event run by the young people with a dry run of the community Pizza oven and gifts for sale which the young people had made to raise funds for Youthie.

While it was great to not have the same gang fights and youth violence from 2020 we have still some big issues with young people (some as young as 10) being pulled into drug networks and sadly someone was murdered by a young person on The Venny which has had a big affect on the community. However we continue to work with others inc. the Police, MASH and others to provide direct and ongoing support to the young people involved.





Working with the Parish Council we have also been able to provide trips for some of the young people including to Thorpe Park and Cotswold Wildlife Park. We also had several Year 11s volunteer with us during their really long summer holiday helping run sports day at all three school sites and then setting up a 'Smoothie Bar' for families as they made their way home from school.

Friday shine Youth sessions for the young people that want to explore faith restarted in the summer around a fire pit or going for socially distanced walks! We also continue to provide one-to-one mentoring for these young people particularly those experiencing challenging circumstances.

It was also great to be able to keep Friday Football going wherever possible as this has been a lifeline to so many young people - up to 80 a week.

One of the main projects we have been working on has been looking at Youth Loneliness. Part of adolescence is learning how navigate developing and changing friendships and this can lead to times of loneliness for many young people. However there are other young people who experience chronic loneliness. As part of our research we saw young people experiencing significant loneliness and isolation due to bullying, mental health issues, bereavement, being a refugee or having English as a second language. Some of the things we have worked with the young people on are continuing to develop our work with Young Carers, detached work at break and lunchtimes to support those who are isolated and places like the Beach Hut where young people can socialise and make friends. It has been a fascinating but sobering piece of research which will no doubt shape our work both in the short and long term.

We will remember them

### Swindon Academy

Over the last 18 months we have learnt lots about technology with our office regularly being turned into a 'TV studio' as we either pre-recorded or streamed assemblies live over TEAMS to classrooms. As the technology became more reliable we were able to find creative ways of trying to increase the engagement with students through use of the chat bar and getting particular classes to respond to the questions posed. It was great to be able to restart face-to-face assemblies in time for Black History Month in October - only for just days later to move back to online for the whole school Act of Remembrance.

Lunchtime / after school clubs were the staple of our work pre-Covid however with year groups in bubbles and extra-curricular clubs postponed we have had to adapt much of what we do. At lunchtimes we now either do detached work in the playground or Astroturf and we have run a

number of awareness activities in the secondary covered area including the building of an 8' high waterfall and turning the whole area into a garden as we explored the role of 'Nature' as part of Mental Health awareness week.

Back in March we were able to take lessons for the whole of Year 3 at both Beech Avenue and Alton Close sites. Using the playground and fields we were able to follow the Easter story and give space for the children to reflect on their own beliefs and feelings around the story.

In the last year a number of young people in the school have experienced the death of a family members - sadly often in very tragic circumstances - and it has been our privilege to help provide support. So often there is little we can say or do other than take the young people for a walk or play football or talk - whatever they need to help process their thoughts and feelings.

## Partnerships

We continue to work closely with various agencies and organisations to support our community. We have taken part in regular Community Safety meetings with Police, Fire, Youth Justice, local Councillors, Crimestoppers and others. We have participated in the Swindon and Wiltshire Youth Network which has been really valuable in connecting with other organisations across the county.

We worked really closely with Pinehurst Initiative Forum (PIF) in delivering Youth Social Action project #iwill and with the young people we were able to create a Community Beach to go with the Beach Hut including deciding its size, making the frame and keeping it clean. The lorry delivering the sand couldn't drop it where we had hoped but within about 10 minutes the young people had run off and found a number of wheelbarrows and for the next two hours everyone got involved in moving the 13 tonnes of sand!!

With Amy joining as Youth Worker it has been great to be able to offer support to some of the other churches locally in their Youth work. Moredon Sport pre-pandemic was run

by Rodbourne Cheney Baptist Church (RCBC) each week and it was great to be able to help them relaunch this. This now has grown and during the holidays there are extra sessions each week and a mini fun day in the summer. At Christmas we were able to support the local young people, RCBC and St. Mary's Church in running a Community Carols event - the first in more than 37 years!

Its great to continue to work with the amazing Aaron and Jo from Central North Swindon Parish Council too

In October half-term we were able to work with St. Peter's Church to run some family activities at Swindon Academy (Alton Close), Penhill which was great fun. We were also privileged to help lead a confirmation group for 6 people who were confirmed at the Cathedral in December.

Working with Nova Hreod College, St. Mary's and RCBC we have been able to launch a Chaplaincy team to the school which has been great and we have already started regular detached sessions at break and lunchtimes, an afterschool club and assemblies launching the schools charities for the year and Remembrance.





## Team

Alongside Simon (Pioneer Minister) and the fantastic Becky (Support and Development worker), it was exciting to have Amy Cox join the team as Lead Youth and Community Worker. Amy has been involved in working for shine for a few years but it was great to have the opportunity for her to come on board full-time and develop the work with young people in the community and the new work in Nova Hreed Academy and Moredon.

We were privileged to have two incredible young women from the German organisation GVS placed with us again this year. Noemi Werner (2020-21) and Leonora Werner (2021-22) have been an incredible blessing to us and so much of what we have done was made possible by their hard work and dedication, especially with all the changes caused by Covid. A big thank you goes to Jessie and Benni and family for hosting them both.

We were also joined by two local 'mums' who have volunteered as interns for shine alongside Leonora since September and it's been great to have Whitney and Jodie as part of the team! The amazing Rowan Kikke has helped keep all the young people (and team) in check at the Beach Hut and Friday Football sessions and it was great to have Ellie-Mae, Sonam, Ben & Ben join the team as sessional workers. We have also been blessed by a huge amount of volunteers who have helped with all areas of the work. To name but a few: Jenny, Crispian, Rob, Kathy, Jodie, Joe, Andie, Jenny, Kayleigh, Anne, Tom, Kass, all the young volunteers and the fantastic trustees Keith Lamdin, Phil Ashby, Andie Halls, Dave & Heather Blandford, our amazing Treasurer Chris Pope and Simon as Pioneer Minister and Leader of shine.

## Safeguarding

Safeguarding of all those we have the privilege of working with is core to our work. Throughout 2021 we worked both within shine and with other partners to ensure high standards of practice including safely recruiting new staff and volunteers, and a continuous programme of professional development and training. Due to the nature of our work with those at risk and on the margins we continued to ensure proper recording of concerns and referring significant issues to statutory agencies including Police, Swindon MASH and Swindon Academy. Safeguarding features as a standing item on all trustee meetings and we carried out an annual Safeguarding audit using the Diocese's Safeguarding Dashboard and are acting on the resulting action plans.



## Thanks

We are grateful to the following organisations for their kind support and / or donation:

ASDA

Beard Construction

Bristol Diocese

Central North Swindon Parish Council

#iwill

Lawn Community Church

Made by Sport

Microsoft

Rodbourne Baptist Church

Sovereign Housing

Swindon Academy

Swindon Community Church

Swindon Youth for Christ

Wiltshire Community Foundation

Wiltshire Sports Partnership

34SP.com

and to all those individuals who have given so generously to the work!

For more information about the work of shinepinehurst contact:  
shinepinehurst, c/o 14 The Circle, Pinehurst,  
Swindon SN2 1QR;  
p: 01793 339775  
e: info@shinepinehurst.co.uk  
f: @shinepinehurst  
i: shinepinehurst  
t: @shinepinehurst

shinepinehurst is a Charitable Incorporated Organisation Registered Charity no. 1182654  
Part of the Bristol Diocese

